



T&S BRASS AND BRONZE WORKS, INC.
 2 Saddleback Cove / P.O. Box 1088
 Travelers Rest, SC 29690

Model No.
B-7232-U01XS3

Item No.

Travelers Rest, SC: 800-476-4103 • Simi Valley, CA: 800-423-0150 • Fax: 864-834-3518 • www.tsbrass.com

This Space for Architect/Engineer Approval

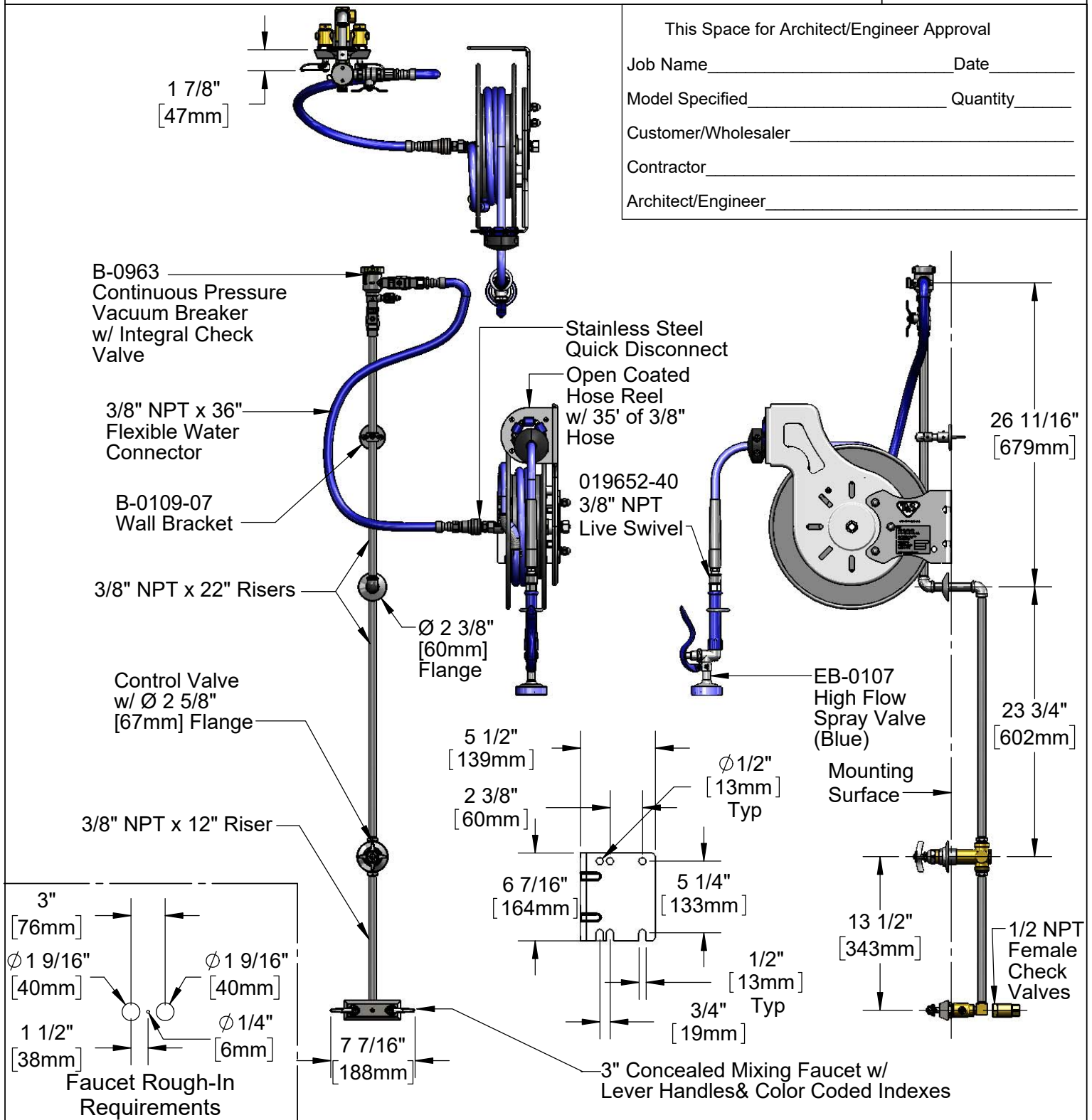
Job Name _____ Date _____

Model Specified _____ Quantity _____

Customer/Wholesaler _____

Contractor _____

Architect/Engineer _____



Product Specifications:
 Open Coated Hose Reel w/ 35' of 3/8" Hose, High Flow Spray Valve (Blue) w/ Swivel, Vacuum Breaker, 3/8" NPT Flexible Water Connector, 3" Concealed Mixing Faucet & Control Valve

Product Compliance:
 NSF 61 Exempt (Non-Potable)
 EPA Act 2005 Non-Compliant (PRSV)
 ASSE 1056 (VB)



T&S BRASS AND BRONZE WORKS, INC.
 2 Saddleback Cove / P.O. Box 1088
 Travelers Rest, SC 29690

Model No.
B-7232-U01XS3

Item No.

Travelers Rest, SC: 800-476-4103 • Simi Valley, CA: 800-423-0150 • Fax: 864-834-3518 • www.tsbrass.com

	ITEM NO.	SALES NO.	DESCRIPTION
		1	B-0513
	2	B-CVH1-2	1/2" Check Valve
	3	145X	3/8" NPT x 12" Riser
	4	0RK2	Control Valve
	5	001355-40	Elbow, 3/8" NPT
	6	000371-40	3/8" NPT x 22" Riser
	7	B-0963	1/2" NPT Continuous Pressure VB w/ Integral Check Valve
	8	B-0109-07	Wall Bracket
	9	HW-2B-36	3/8" NPT x 36" Flexible Water Hose
	10	AW-5B	3/8" NPT Quick Disconnect
	11	002535-25	3/8" NPT Close Nipple
	12	B-7232-01	Open Coated Reel w/ 35' of 3/8" Hose
	13	000907-45	Spray Valve Hold Down Ring
	14	010476-45	#27 Washer
	15	EB-0107	High Flow Spray Valve (Blue)
	16	001359-40	1/2" NPT Male x 3/8" NPT Female Hex Bushing
	17	015073-40	Check Valve w/ 1/2" NPT Adapter
	18	012504-40	Grip Handle (Blue), 3/8" NPT
	19	019652-40	3/8" NPT Live Swivel

Product Specifications:
 Open Coated Hose Reel w/ 35' of 3/8" Hose, High Flow Spray Valve (Blue) w/ Swivel, Vacuum Breaker, 3/8" NPT Flexible Water Connector, 3" Concealed Mixing Faucet & Control Valve

Product Compliance:
 NSF 61 Exempt (Non-Potable)
 EPA Act 2005 Non-Compliant (PRSV)
 ASSE 1056 (VB)