

Location:

# SYMMONS® Allura™

## Shower System S-4701 Specification Submittal



### Feature Highlights

- Symmons shower system with lever handle.
- Symmons Temptrol® pressure balancing mixing valve with adjustable stop screw to limit handle turn.
- Secondary integral volume control handle
- Showerhead, #4-143, 3 mode flood, mist or pulse spray
- Showerhead mounting arm and flange
- Showerhead, 2.5 gpm (9.5 L/min) standard flow rate
- Polished chrome finish

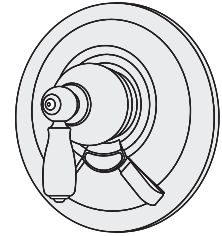
### Model Numbers

- S-4701..... Shower System with Symmons Temptrol® pressure balancing mixing valve, p/n S-4001-BODY
- S-4701-TRM..... Trim only, valve must be ordered separately
- S-4001-BODY..... Symmons Temptrol® pressure balancing mixing valve without trim
- S-4001-X-BODY...Symmons Temptrol® pressure balancing mixing valve without trim. Valve includes integral service stops to allow water shut-off for service.

### Finish Options / Modifications

Append appropriate -suffix to model number.

- STN Satin nickel
  - Polished chrome (standard finish)



### Options / Modifications

Append appropriate -suffix to model number.

- IPS 1/2 inch female IPS connections on Symmons Temptrol® mixing valve
- X Symmons Temptrol® pressure balancing mixing valve includes integral service stops to allow water shut-off for service, p/n S-4001-X-BODY. (Option only applies when ordering model S-4701)
- L/HD Showerhead not included  
Includes showerhead arm and flange only
- 2.0 2.0 (7.6 L/min) flow rate restrictor
- 1.5 1.5 (5.7 L/min) flow rate restrictor
- LAM Metal finish insert handle .....
- LR Lever handle .....



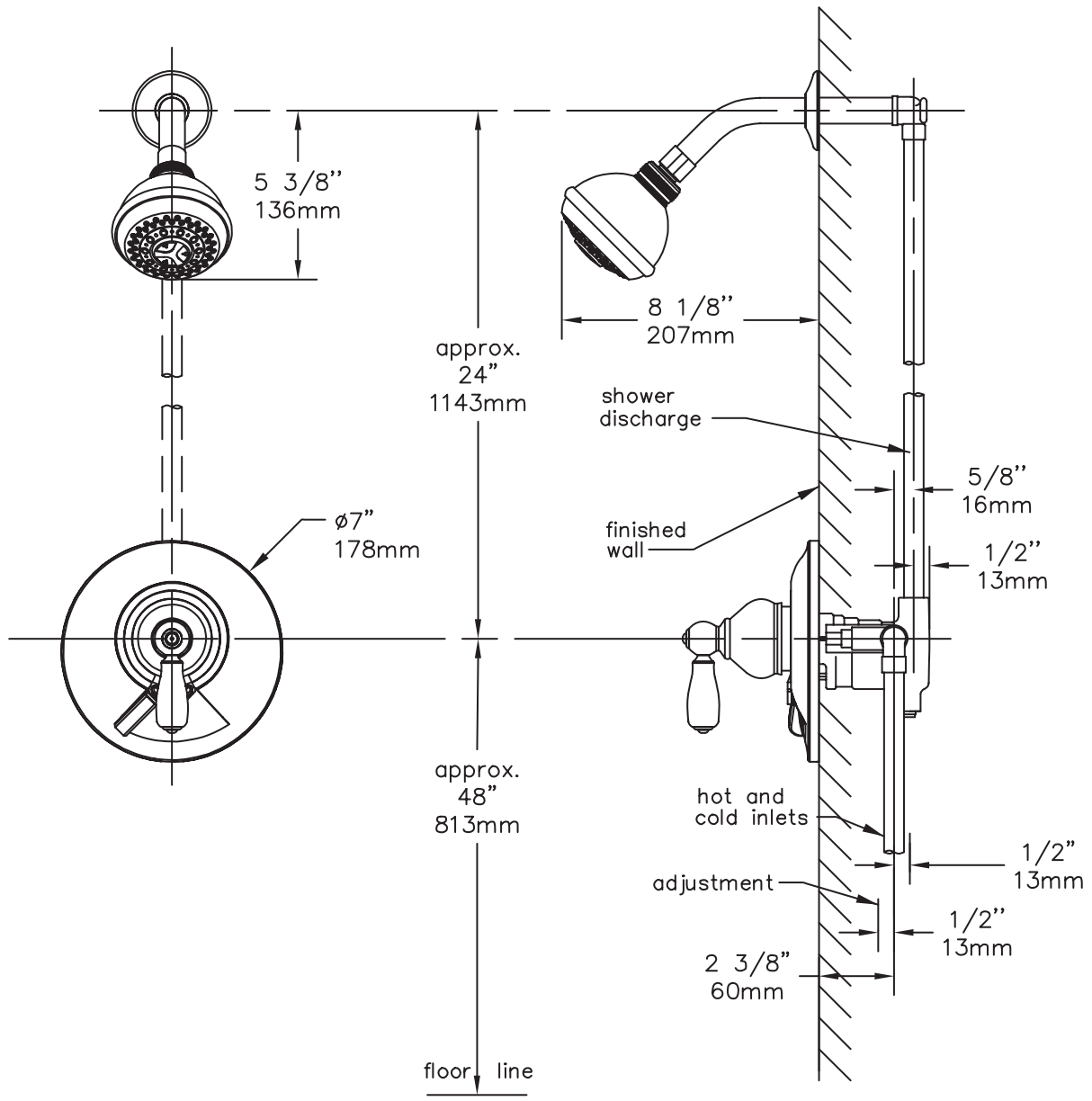
### Standards / Certifications

ASME A112.18.1-2005/CSA B125.1-05

### Warranty

- Limited Lifetime - to the original end purchaser in consumer installations.
- 5 years - for commercial installations

## Dimensions *Allura Shower System, S-4701*



**Note:** *Dimensions subject to change without notice.*