

SEACHROME

Seachrome Corporation
 1906 East Dominguez Street
 Long Beach, California 90810
 Phone: (800) 955-2476
 Fax: (800) 444-3380

Description:

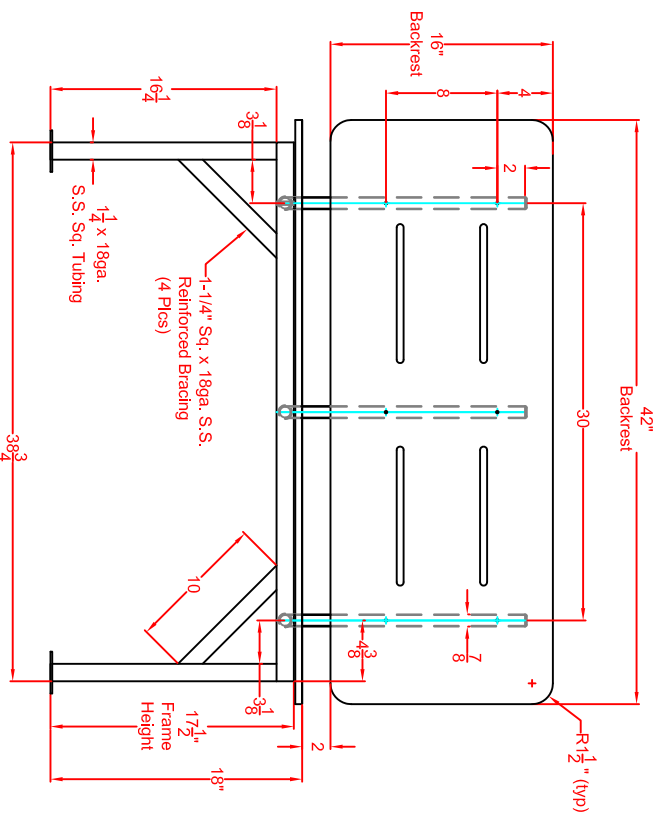
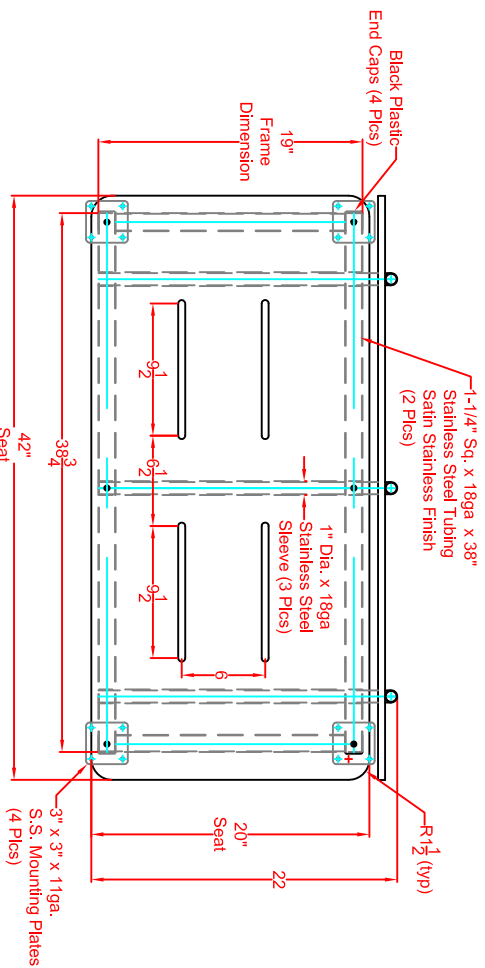
SSBB-420220-PTS
Stationary Bench Seat with Removable Backrest
(Solid Teak Phenolic Seat & Backrest)

Customer:

Customer Part #

08-03-2018

This drawing and the information contained herein is proprietary to Seachrome Corp. and shall not be reproduced, copied or disclosed in whole, or part, or used for manufacturing or for any other purpose without the written permission of Seachrome Corporation.



- Materials:**
- Main Seat Frame, One Piece Heliarc Welded:
 - 1-1/4" Square, 18 gage (0.049) Stainless Steel.
- Back Rest:**
- 1" Round, 18 gage (0.049) Stainless Steel.
- Seat and Back Rest:**
- Choice of:
 - 2" White Padded Naugahyde or
 - 1/2" White or Teak Phenolic
- Weight Capacity:**
- 900 Lbs.

