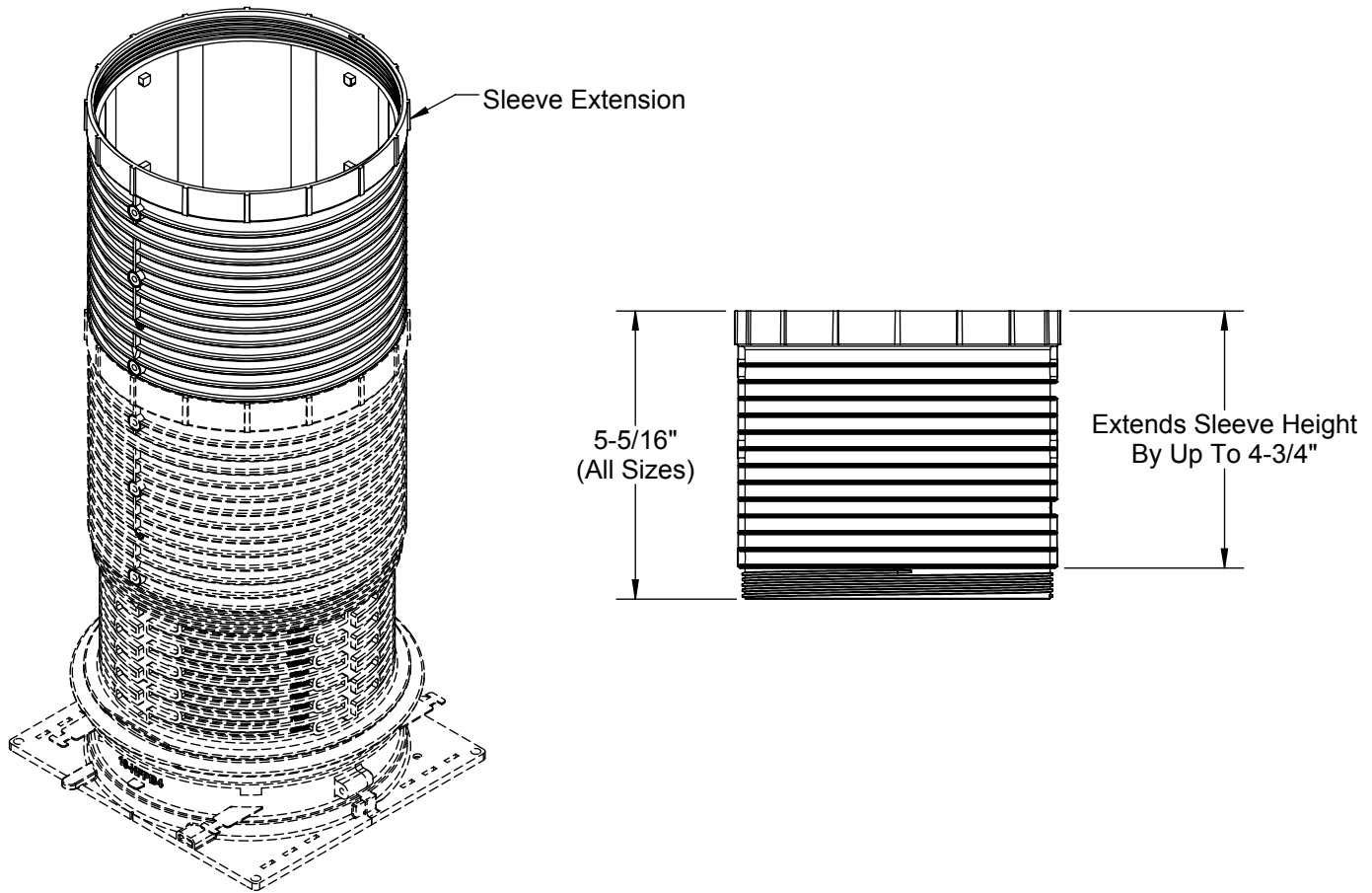


PRODUCT SPECIFICATION DRAWING

Hydroflame Pro Series - Sleeve Extensions



The **HOLDRITE® Hydroflame Pro Series "Sleeve Extensions"** (#HFPE1 - #HFPE6) are available to fit a wide variety of Sleeve combinations, from 1" thru 6" sizes. Each extension adds up to 4-3/4" of height in 1/4" increments. No coupling is needed! Height markings are shown on each part, in both U.S. and metric.

Product Information:

- Material:
Body: Polypropylene.
- Patented & Patents Pending.
- See Hydroflame Pro Series Installation Instructions, Best Practices documents and the latest UL Fire Resistive Directory file (R25101) for details.

Product Submittal	
Job Name:	
Date:	
Part Number:	Qty:
Architect / Owner:	
Contractor:	
Notes:	

THIS INFORMATION IS PROPRIETARY TO HOLDRITE AND IS SUBJECT TO CHANGE WITHOUT NOTICE. IT MAY NOT BE REPRODUCED IN PART OR WHOLE WITHOUT WRITTEN AUTHORIZATION.

